

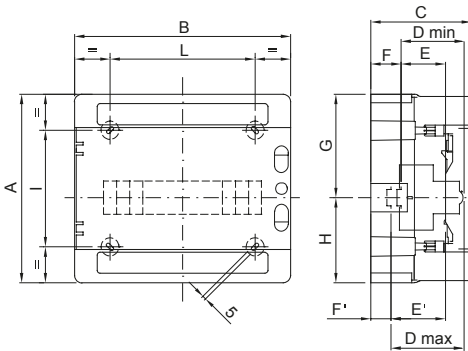


IP65 range of watertight enclosures from 4 to 72M with smoked transparent door. The main technical features are: reversible front and back panel, removable frames and panels with windows and detachable doors with up to 180° opening and lock accessory. The enclosures can be equipped with bipolar and unipolar terminal blocks, 80 A and 125 A, with screw wiring; they allow to create simple and neat wiring reducing the set-up time of the enclosure.

### BEHAVIOUR WITH CHEMICAL AND ATMOSPHERIC AGENTS

| Saline solution | Acids         |                    | Bases         |                    | Solvents           |               |               |                    | Mineral oil        | UV rays            |
|-----------------|---------------|--------------------|---------------|--------------------|--------------------|---------------|---------------|--------------------|--------------------|--------------------|
|                 | Concentrated  | Diluted            | Concentrated  | Diluted            | Hexane             | Benzol        | Acetone       | Alcohol            |                    |                    |
| Resistant       | Not resistant | Limited resistance | Not resistant | Limited resistance | Limited resistance | Not resistant | Not resistant | Limited resistance | Limited resistance | Limited resistance |

### DIMENSIONAL



|     | Codice          | A   | B   | C   | D min | E  | F  | G     | H     | D'max | E' | F' | NR | I   | L   |
|-----|-----------------|-----|-----|-----|-------|----|----|-------|-------|-------|----|----|----|-----|-----|
| 4M  | GW 40 101       | 210 | 143 | 100 | 75    | 48 | 15 | 105   | 105   | -     | -  | -  | 3  | 156 | 67  |
| 8M  | GW 40 102/US/BS | 210 | 215 | 100 | 75    | 48 | 15 | 105   | 105   | -     | -  | -  | 4  | 110 | 115 |
| 12M | GW 40 103/US/BS | 260 | 298 | 140 | 75    | 48 | 48 | 117,5 | 142,5 | 102   | 75 | 21 | 4  | 161 | 200 |
| 18M | GW 40 104/US/BS | 285 | 410 | 140 | 75    | 48 | 48 | 117,5 | 142,5 | 102   | 75 | 21 | 4  | 185 | 310 |

### TECHNICAL SYMBOLOGY STANDARDS/APPROVALS

